

Features

The Truck Scale Blue Package is a comprehensive system designed for accurate and efficient weighing of trucks in industrial, commercial, and logistics operations.

It combines robust hardware components to ensure precise weight measurements, reliability, and user-friendly operation.

Functions

- Accurate Weighing for 10t to 50t
- Signal Consolidation.
- Weight Display indicator.
- External Visibility on the Yaohua YHL-3
- Data Processing
- Durability and Reliability
- Operational Efficiency
- Ease of Integration

Devices	Number of items
Zemic HM9B (Ball & Cap)	8
Load Cell	
Yaohua JHX Junction Box	1
Yaohua A9 Indicator	1
Yaohua YHL-3 Scoreboard	1



Short Description



- Nickel plated alloy steel IP68 dual shear beam load cell
- High accuracy
- Suitable for truck, track, hopper and other electronic weighing devices
- Current calibrated (sc-option)



Test certificate no. D09-06.08
C of C no R60/2000-CN1-06.06

Available Models

Capacity	Accuracy	Full article description
10t	C3	HM9B-C3-10t-12B-2-FH
20t	C3	HM9B-C3-20t-12B-2-FH
25t	C3	HM9B-C3-25t-20B(-SC) -2-FH
30t	C3	HM9B-C3-30t-20B(-SC) -2-FH
40t	C3	HM9B-C3-40t-16B-2-FH
50t	C3	HM9B-C3-50t-16B-2-FH

Technical Specifications HM9B

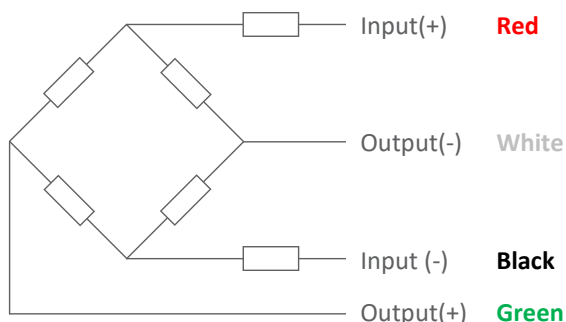
Accuracy Class		OIML R60 C3		
Output Sensitivity (= FS)	mV/V	2.0 ± 0.002		
Maximum Capacity (E _{max})	kg	10, 20, 25	30, 40, 50	
Max. Number of Load Cell Intervals	n _{LC}	3000		
Ratio of min. LC Verification Interval	$Y = E_{max} / V_{min}$	15000	7500	
Combined Error	%FS	≤± 0.02		
Creep Error (30 minutes)	%FS	≤± 0.02		
Temperature Effect on Zero (ZTC)	%FS/10°C	≤± 0.02		
Temperature Effect on Sensitivity (STC)	%FS/10°C	≤± 0.02		
Zero Balance	%FS	≤± 1.5		
Safe Overload	%FS	150		
Ultimate Overload	%FS	300		
Excitation, Recommended Voltage	V	5 ~ 12		
Excitation, Maximum Voltage	V	18		
Input Resistance	Ω	700 ± 7		
Output Resistance	Ω	703 ± 4		
Insulation Resistance (50V)	MΩ	≥5000		
Compensated Temperature	°C	-10 ~ + 40		
Operating Temperature	°C	-35 ~ + 65		
Storage Temperature	°C	-40 ~ + 70		
Load Cell Weight	kg	10t: 15	20t – 40t: ~17	50t: 25
Element Material		Nickel plated alloy steel		
Ingress Protection (acc. to EN 60529)		IP68		
Recommended Torque on Fixation Bolts	Nm	1100		
ATEX Classification (optional)		II1G Ex ia II1C T4	II1D Ex iaD 20 T73°C	II3G Ex nL IIC T4

Wiring

Features:

Cable type: Shielded, 4 conductor cable , conductor AWG 24
 Cable diameter: Ø 5.5mm
 Cable length: 16m (standard), 12m & 20m lengths also available
 Cable jacket: PVC
 Shield not connected to element

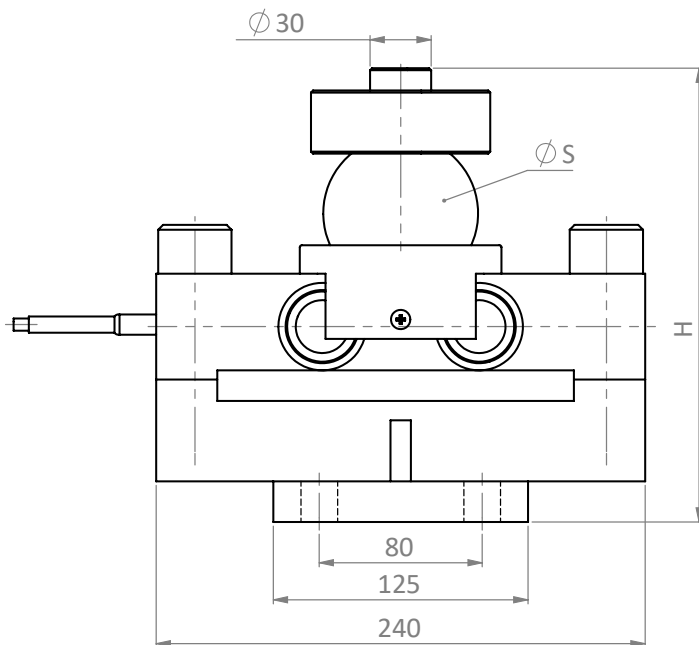
4-Wire Connection Diagram



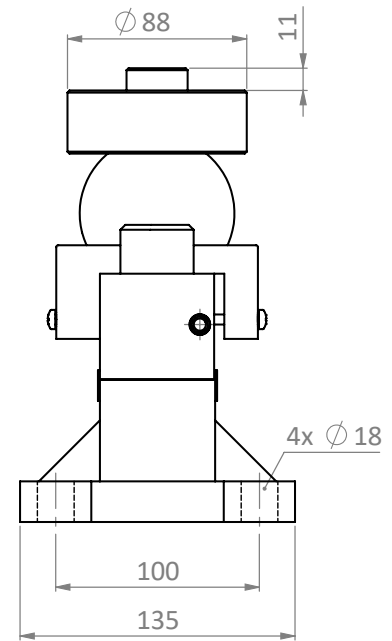
Specifications and dimensions are subject to change without notice and do not constitute any liability whatsoever.

Dimensions in mm

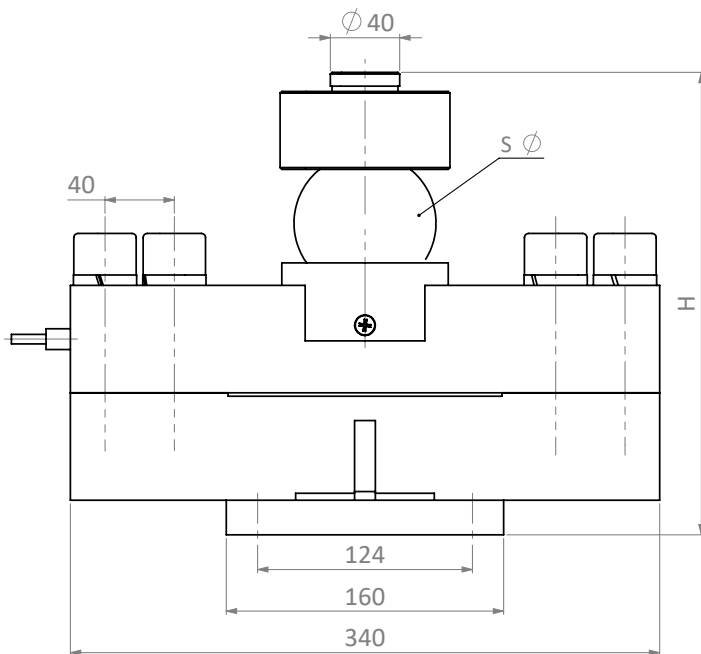
10t – 40t Front View



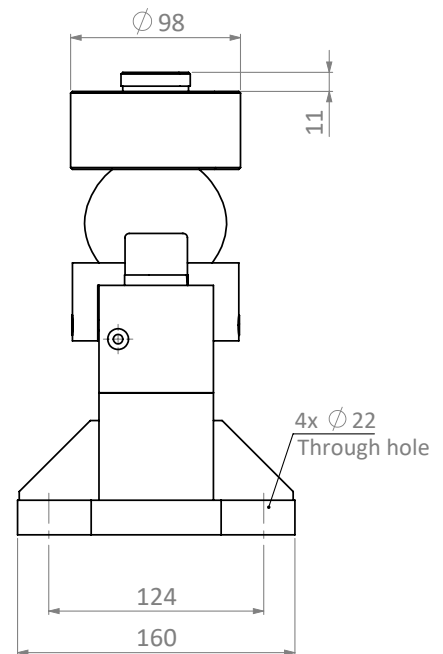
Side View



50t Front View



Side View



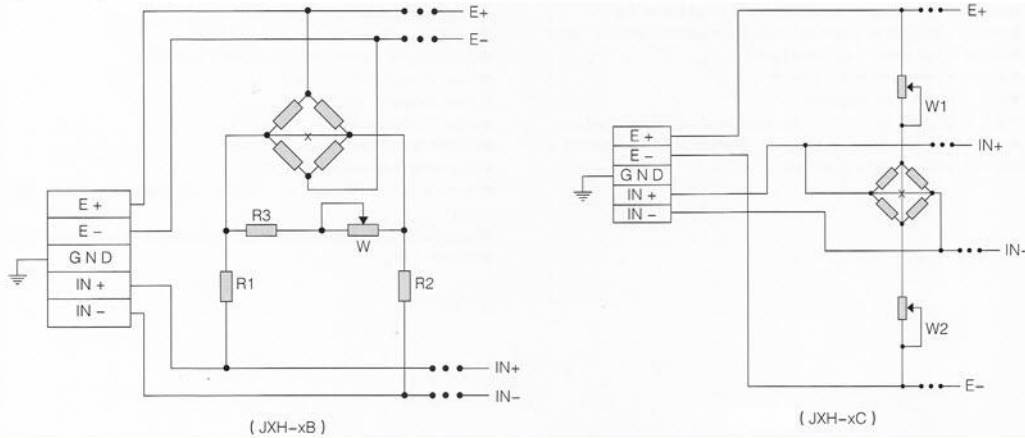
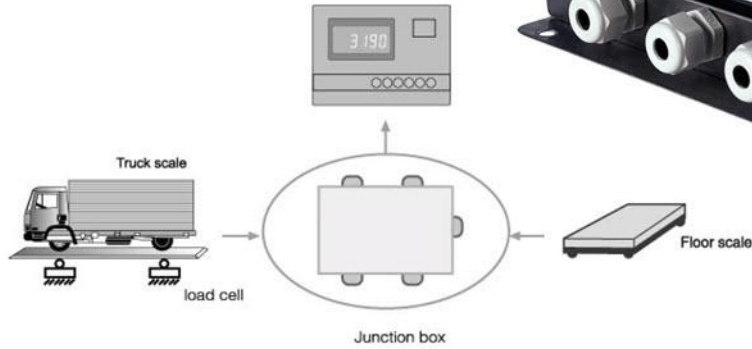
Dimension Capacity	H	ØS
10t	195	50
20t-40t	225	76
50t	267	82

Specifications and dimensions are subject to change without notice and do not constitute any liability whatsoever.



Junction Box

JXH



Introduction:

Able to connect with strain gauge load cell at resistance of 350~800 ohm, excitation 3~15V DC.

Standard Function:

- ◆ Selection of connection mode: JXH-xB for parallel mode; JXH-xC for serial mode
- ◆ x for quantity of load cell: 4, 6, 8
- ◆ Model: JXH-4C; JXH-4B; JXH-6C; JXH-6B; JXH-8C; JXH-8B
- ◆ High precision potentiometer
- ◆ For parallel mode, wire connection method with selection of compacting or welding
- ◆ For parallel mode, equipped with TVS pipe for anti-surge
- ◆ Customized for 10 wires
- ◆ Housing: Stainless steel, Aluminium alloy, Plastic

Technical Parameter:

Adjust range

- ◆ Load cell 350 ohm as example: serial mode about 5%; parallel mode about 3%
- ◆ Load cell 700 ohm as example: serial mode about 3%; parallel mode about 2%



Truck Scale Indicator

A9+

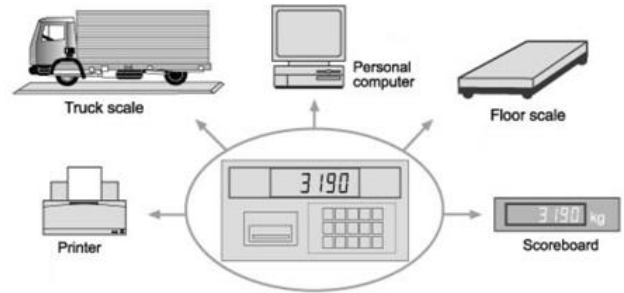
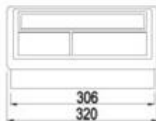


A9+P

With micro-printer



A9+
b type Plastic Housing
With outside rechargeable battery



Introduction:

Weighing indicator XK3190-A9+ adopts high precision $\Sigma-\Delta$ A/D conversion technology, widely applied in electronic floor scale, electronic truck scale and so on alike static weighing system.

Feature:

- ◆ Compatible with all functions of model XK3190-A9;
- ◆ $\Sigma-\Delta$ high precision A/D conversion method, able to process input signal from -16mV to 18mV
- ◆ Good consistency, no need to re-calibrate a scale if change the former indicator, high precision
- ◆ DC power socket with anti-connect and anti-short circuit protection;
- ◆ With strong anti-disturbance function

Standard Function:

- ◆ AC/DC power supply, standard chargeable battery
- ◆ 7-bits 0.8 inch LED display, 3-level battery indications
- ◆ Able to setup zero-tracking range, zero(auto/manual) range
- ◆ With 2-point calibration correction function, 2 compensation calibration methods
- ◆ Able to save 1001 weighing records, 1000 truck records consisting of truck ID and corresponding tare weight, 201 records of goods
- ◆ Able to print across and upright weighing bill
- ◆ Able to print different statistical reports
- ◆ Standard RS232 communication interface(RS422/RS485 optional)
- ◆ Standard scoreboard interface with current loop
- ◆ Standard parallel print interface
- ◆ Able to connect assigned thermal printer
- ◆ XK3190-A9+P with built in printer

Technical Parameter:

- ◆ A/D conversion method: $\Sigma-\Delta$
- ◆ Input signal range: $-16\text{mV}\sim 18\text{mV}$
- ◆ A/D conversion speed: 10times/sec.
- ◆ A/D conversion code: 1 million code
- ◆ Load cell excitation: DC 5V
- ◆ Max. connection number of load cell: 8 at 350 ohm/16 at 700 ohm
- ◆ Load cell connection mode: 6 wire, auto compensation for long distance
- ◆ Division: 1/2/5/10/20/50/100 optional
- ◆ Clock: real clock without effect when power off
- ◆ Transimission: current loop/RS 232 signal
- ◆ Baud rate:600
- ◆ Transimission distance: ≤ 30 meters
- ◆ Serial communication:interface
- ◆ Transimission method:RS232/RS422(optional)/RS485(optional)
- ◆ Baud rate:600/1200/2400/4800/9600(optional)
- ◆ Transmission distance:RS232: ≤ 30 meters;RS422/RS485: ≤ 1200 meters

Print interface

- ◆ Standard parallel output interface
- ◆ Built-in micro-printer(A9+P)
- ◆ Data storage:1000 truck records consisting of truck ID and corresponding tare weight 201 cargo ID.1001 weighing records
- ◆ Power supply:AC 2220($-15\%\sim +10\%$);50Hz($-2\%\sim +2\%$)
DC 6V/10Ah External battery rechargeable

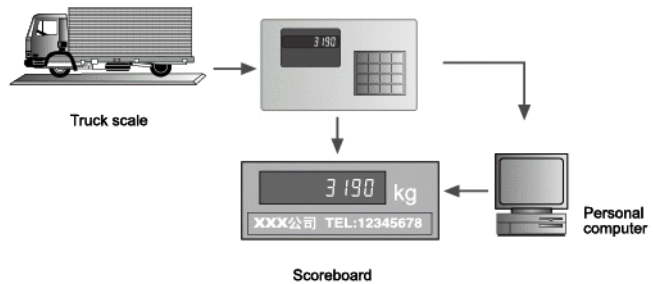
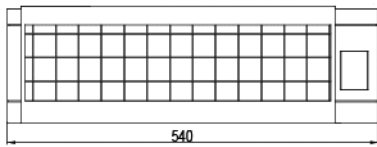


Scoreboard

YHL



Common type YHL-3



Introduction:

Auxiliary display for weighing device by viewing weighing result from long distance. Auxiliary display for weighing system by connecting with computer with matching output format. Weighing indicator should be equipped with corresponding communication interface to connect with scoreboard.

Standard Function&Main parameters

- ◆Dynamic scan flip-latching technology (YHL-1/3/5/5S/5K/5G)
- ◆Static and dynamic scan flip-latching technology (YHL-8)
- ◆High-lighted digital segment and broad eyesight
- ◆Gross or net weight display from indicator or other output system
- ◆Display character: 18-bit LED with character height 75mm (YHL-3/3 steel housing)
- ◆Display character: 6-bit LED with character height 75mm (YHL-3 steel housing)
- ◆Display character: 6-bit LED with character height 125mm (YHL-5 steel housing)
- ◆Display character: 6-bit LED with character height 125mm (YHL-5S, character LED, water proof housing)
- ◆Display character: 6-bit LED with character height 125mm (YHL-5G, dot LED, water proof housing)
- ◆Display character: 6-bit LED with character height 200mm (YHL-8 steel housing)
- ◆Display character: 6-bit LED with character height 25mm (YHL-1 steel housing)

Power: AC187-242V:49-51HZ

Communication interface: current loop way/RS232

Operating temperature: 0-40°C

Operating humidity: ≤85% RH

Nonstandard Function(Optional, please inform sales staff if need):

- ◆Connection to PC function
(Output format of PC should be offered by customer)
- ◆Connection to other indicator function
(Corresponding manual for indicator or sample should be offered)