



Manufactured according to OIML R60 standards



Capacity 250000 kg



IP67



Capacity from 30000 kg to 100000 kg



IP68

- 17-4 PH STAINLESS STEEL
- HOLES FOR STANDARD SHACKLES
- COMBINED ERROR  $\leq \pm 0.08\%$
- IP67 - IP68 PROTECTION RATING

CAPACITY	kg	NET WEIGHT (kg)
30000		11
40000		11
50000		11
60000		11
100000		-
250000		64

### CERTIFICATIONS

- EAC** Complies with the Eurasian Customs Union standards
- UK CA** Equivalent of the CE marking for the United Kingdom

#### CERTIFICATIONS ON REQUEST

- ✓ Linearity test
- Ex** ATEX II 1GD (zone 0-1-2-20-21-22) ( **CE** - **UK CA** )
- IECEx** (zone 0-1-2-20-21-22)
- EAC Ex** Complies with the Eurasian Customs Union standards for use in potentially explosive atmospheres

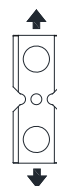
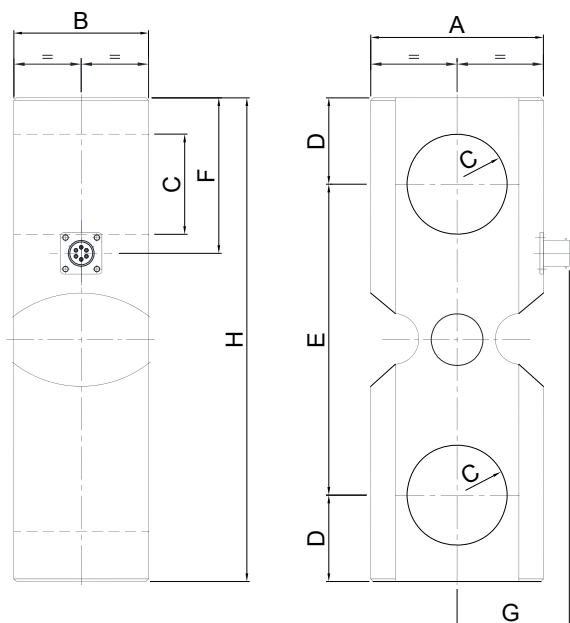
### OPTIONS ON REQUEST

#### DESCRIPTION



Two redundant strain gauges Wheatstone bridges (350  $\Omega$ ) with two output cables; for dual safety systems.

### DIMENSIONS (mm)



	kg 30000 kg 40000 kg 50000 kg 60000	kg 100000	kg 250000
<b>A</b>	100	127	240
<b>B</b>	78	88	110
<b>C</b>	Ø 58	Ø 71	Ø 102
<b>D</b>	50	70	120
<b>E</b>	180	200	360
<b>F</b>	90	120	185
<b>G</b>	65	68	136
<b>H</b>	280	340	600

### TECHNICAL FEATURES

Material	AISI 420 stainless steel		
Nominal load (E max)	30000 - 40000 - 50000 - 60000 - 100000 - 250000 kg		
Combined error	≤ ±0.08%		
Protection rating	IP68 (30000 - 100000 kg), IP67 (250000 kg)		
Rated output	1.0 mV/V ±0.1%	Input resistance	350 Ω ±20
Temperature effect on zero	0.005% °C	Output resistance	350 Ω ±5
Temperature effect on span	0.005% °C	Zero balance	±1%
Compensated temperature range	-20 °C / +70 °C	Insulation resistance	>5000 MΩ
Operating temperature range	-30 °C / +90 °C	Safe overload (% of full scale)	150%
Creep at nominal load in 30 minutes	0.03%	Ultimate overload (% of full scale)	300%
Max supply voltage without damage	15 V	Deflection at nominal load	0.3 mm

### ELECTRICAL CONNECTIONS

Cable length	10 m
Cable diameter	6 mm
Cores	6 x 0.14 mm <sup>2</sup>

