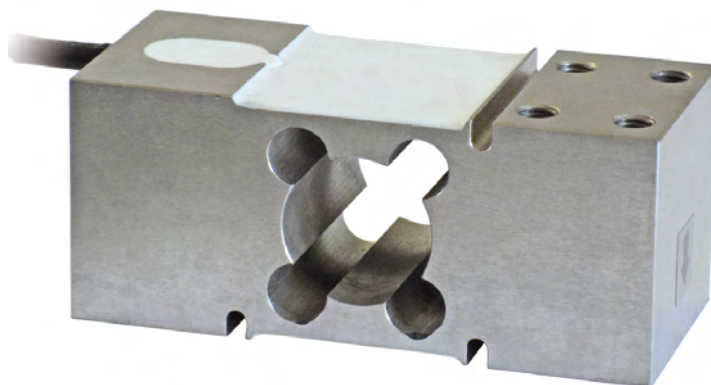




Manufactured according to OIML R60 standards

Capacity from 75 kg to 500 kg



- AISI 420 STAINLESS STEEL
- COMBINED ERROR  $\leq \pm 0.02\%$
- IP67 PROTECTION RATING

CAPACITY	kg	PLATFORM (mm)	NET WEIGHT (kg)
	75	600 x 600	1.8
	150	600 x 600	1.8
	300	600 x 600	2
	500	600 x 600	2

### CERTIFICATIONS

**EAC** Complies with the Eurasian Customs Union standards

**UK CA** Equivalent of the CE marking for the United Kingdom

#### CERTIFICATIONS ON REQUEST

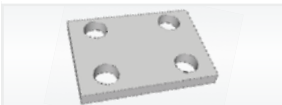
✓ Linearity test

**Ex** ATEX II 1GD (zone 0-1-2-20-21-22) ( **CE - UK CA** )

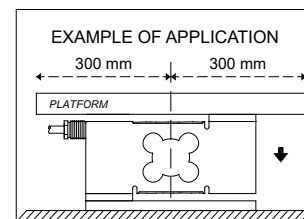
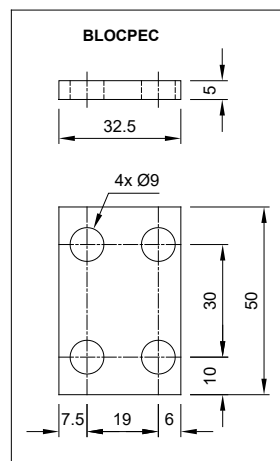
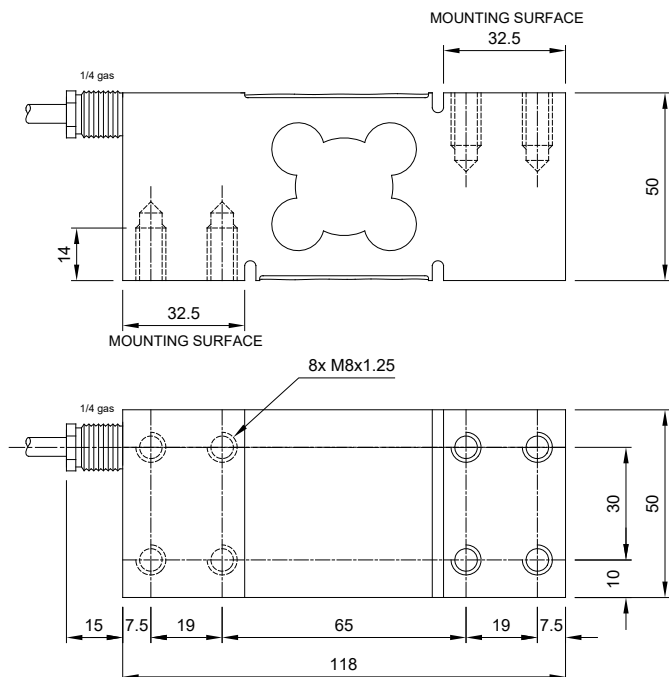
**IECEx** IECEx (zone 0-1-2-20-21-22)

**EAC Ex** Complies with the Eurasian Customs Union standards for use in potentially explosive atmospheres

### COMPLEMENTARY ACCESSORIES

	DESCRIPTION	CODE
	Stainless steel drawn block.	BLOCPEC

### DIMENSIONS (mm)



For the load cell fixing screws, provide the tightening torque indicated in the table

Screw	M8	
	Screw class	6.8
Tightening torque	19 Nm	25 Nm

### TECHNICAL FEATURES

Material	AISI 420 stainless steel		
Nominal load (E max)	75 - 150 - 300 - 500 kg		
Combined error	≤ ±0.02%		
Protection rating	IP67		
Rated output	2 mV/V ±10%	Input resistance	385 Ω ±30
Temperature effect on zero	0.002% °C	Output resistance	350 Ω ±5
Temperature effect on span	0.002% °C	Zero balance	±1%
Compensated temperature range	-10 °C / +40 °C	Insulation resistance	>5000 MΩ
Operating temperature range	-20 °C / +60 °C	Safe overload (% of full scale)	150%
Creep at nominal load in 30 minutes	0.02%	Ultimate overload (% of full scale)	300%
Max supply voltage without damage	15 V	Deflection at nominal load	0.3 mm

### ELECTRICAL CONNECTIONS

Cable length	3 m
Cable diameter	5 mm
Cores	6 x 0.20 mm <sup>2</sup>

