

# DTX

## DOUBLE SHEAR BEAM LOAD CELLS

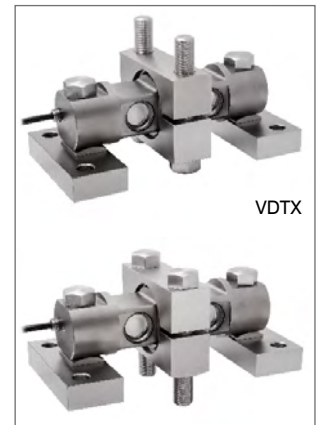
LAUMAS®



Capacity from 20 klb to 60 klb




MOUNTING KIT







VDTX

- AISI 4340 NICKEL PLATED STEEL
- COMBINED ERROR  $\leq \pm 0.02\%$
- IP68 PROTECTION RATING

CAPACITY	kg	ACCURACY CLASS C3		NET WEIGHT (kg)
20klb / 9 ton		•	•	2.7
30klb / 13.6 ton		•	•	7.75
40klb / 18 ton		•	•	7.78
50klb / 23 ton		•	•	8.3
60klb / 27 ton		•	•	8.5

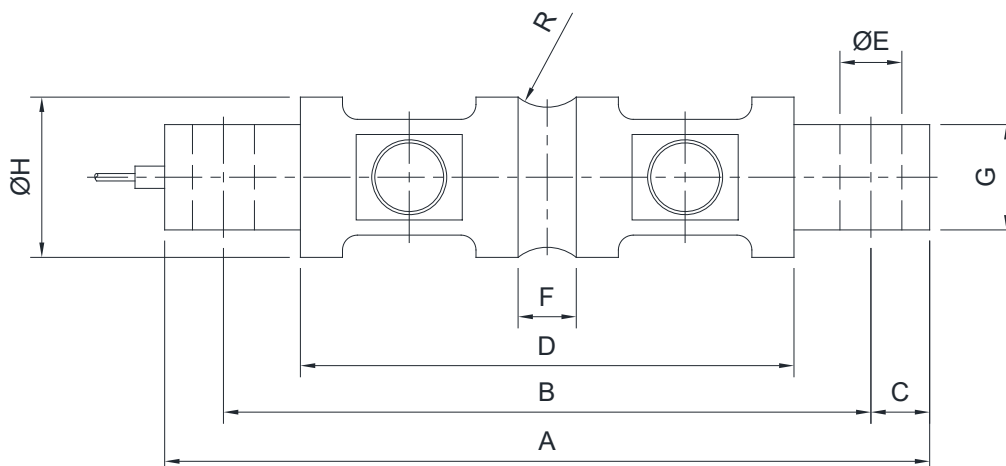
### CERTIFICATIONS

-  OIML R60 C3
-  Complies with the Eurasian Customs Union standards
-  Equivalent of the CE marking for the United Kingdom
-  Complies with United Kingdom regulations for legal for trade use

#### CERTIFICATIONS ON REQUEST

-  Linearity test
-  ATEX II 1GD (zone 0-1-2-20-21-22) (CE - UK CA)
-  IECEx (zone 0-1-2-20-21-22)
-  Complies with the Eurasian Customs Union standards for use in potentially explosive atmospheres
-  FM HazLoc - Complies with the United States and Canada standards for use in potentially explosive atmospheres

### DIMENSIONS (mm)



	A	B	C	D	ØE	F	G	ØH	R
<b>20 klb</b>	206	174.6	15.7	133	16.7	21.6	28.4	49.5	12.7
<b>30-60 klb</b>	260	215	22.4	165	27	25.7	60.2	76.2	25.4

### TECHNICAL FEATURES

Material	AISI 4340 nickel plated steel		
OIML R60 Accuracy class • Verification intervals	C3 • 3000		
Nominal load (E max)	20, 30, 40, 50, 60 klb		
Minimum verification interval (V min)	E max / 10000 - E max / 15000		
Combined error	≤ ±0.023%		
Protection rating	IP68		
Rated output	3.0 mV/V ± 0.267%	Input resistance	700 Ω ± 7
Temperature effect on zero	0.002% °C	Output resistance	700 Ω ± 7
Temperature effect on span	0.002% °C	Zero balance	≤ ±1%
Compensated temperature range	-10 °C / +40 °C	Insulation resistance	≥ 5000 MΩ
Operating temperature range	-35 °C / +65 °C	Safe overload (% of full scale)	150%
Creep at nominal load in 30 minutes	0.016%	Ultimate overload (% of full scale)	300%
Max supply voltage without damage	18 V	Deflection at nominal load	0.6 mm

### ELECTRICAL CONNECTIONS

Cable length	9 m
Cable diameter	5 mm (20klb) / 8 mm (30klb-60klb)
Cores	4 x 0.22 mm <sup>2</sup>

