

Type: Tension & Compression (S-type)

Material: Alloy Steel

Surface: Nickel Plated Treatment

Features: Low Profile

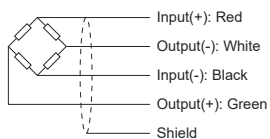
Application: Hybrid Scales
Hopper Weighing
Materials Testing
Crane Scales
Hostile Environment
Lever Conversation



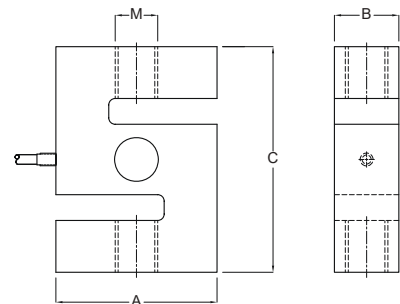
Specifications:

Capacity		5kg / 10kg / 25kg / 50kg / 100kg / 250kg / 500kg 1.0t / 2.0t / 2.5t / 5.0t / 7.5t / 10t / 15t / 20t	
Accuracy Class		C3	C4
Max. Number of Verification Intervals	n_{max}	3000	4000
Minimum Load Cell Verification Level	V_{min}	$E_{max}/7000$	$E_{max}/10000$
Temperature Effect on Zero	%FS/10°C	$\leq \pm 0.0200$	$\leq \pm 0.0100$
Temperature Effect in Sensitivity	%FS/10°C	$\leq \pm 0.0200$	$\leq \pm 0.0090$
Combined Error	%FS	$\leq \pm 0.0200$	$\leq \pm 0.0180$
Creep	%FS	$\leq \pm 0.0200$	$\leq \pm 0.0120$
Output Sensitivity	mv/v	2.0 ± 0.02	
Input Resistance	Ω	385 ± 10	
Output Resistance	Ω	350 ± 3.5	
Insulation Resistance	M Ω	≥ 5000	
Zero Balance	%FS	≤ 1.0	
Temperature, Compensated	°C	$-10 \sim +50$	
Temperature, Operating	°C	$-20 \sim +60$	
Excitation, Recommended	v	$5 \sim 15$	
Safe Overload	%FS	120	
Ultimate Overload	%FS	200	
Standard Cable length	m	5	

Dimensions:



CAP.(t)	A	B	C	M
5-50kg	51	13	64	M8x1.25
100-500kg	51	19.1	76	M12x1.75
1-2t	54	25.4	76	M12x1.75
2.5-5t	76	25.4	108	M18x1.5
7.5t	100	32	140	M24x2
10t	126	50	178	M30x2
15-20t	140	60	188	M39x2



All dimensions: mm.