

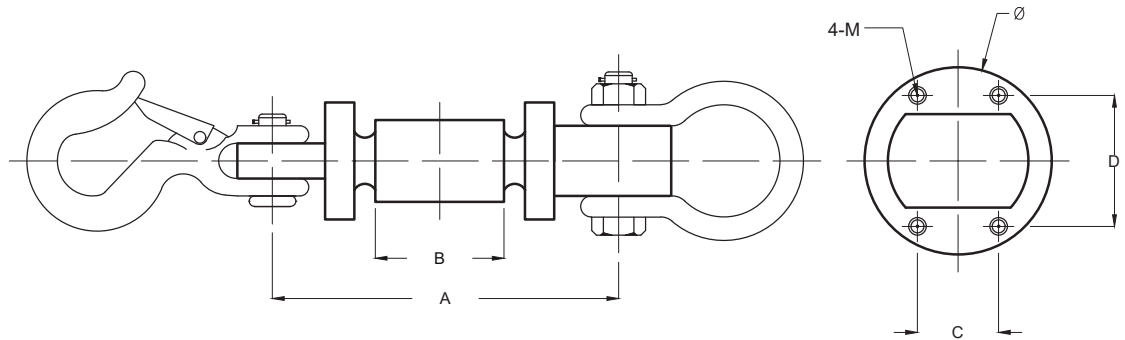
- Type:** Tension
- Material:** Alloy Steel
- Protection:** IP 67
- Features:** It has high precision, strong capability of overload protection and anti-deflective load completed hooks and rings are available
- Application:** Special load cell for crane scales



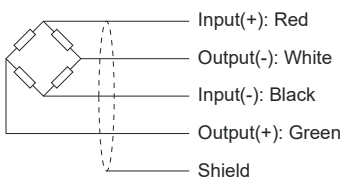
Specifications:

Capacity		1.0t / 2.0t / 3.0t / 5.0t / 10t
Accuracy Class		C3
Max. Number of Verification Intervals	n_{max}	3000
Minimum Load Cell Verification Level	V_{min}	$E_{max}/7000$
Temperature Effect on Zero	%FS/10°C	$\leq \pm 0.0160$
Temperature Effect in Sensitivity	%FS/10°C	$\leq \pm 0.0180$
Combined Error	%FS	$\leq \pm 0.0230$
Creep	%FS	$\leq \pm 0.0190$
Output Sensitivity	mv/v	1.2 ± 0.01
Input Resistance	Ω	385 ± 15
Output Resistance	Ω	350 ± 5
Insulation Resistance	M Ω	≥ 5000
Zero Balance	%FS	≤ 1.0
Temperature, Compensated	°C	-10 ~ +50
Temperature, Operating	°C	-20 ~ +60
Excitation, Recommended	v	8 ~ 12
Safe Overload	%FS	200
Ultimate Overload	%FS	300
Standard Cable length	m	10

Dimensions:



CAP.(t)	A	B	C	D	Φ	M
1	130	74	16	37	48	M6
2,3	150	82	22	47	62	M6
5	188	103	28	56	72	M6
10	230	120	28	66	82	M6



All dimensions: mm.