

Type: Compression (Spoke Type)

Material: Alloy Steel

Protection: IP 67

Features: Anti-Corrosion
Low Profile

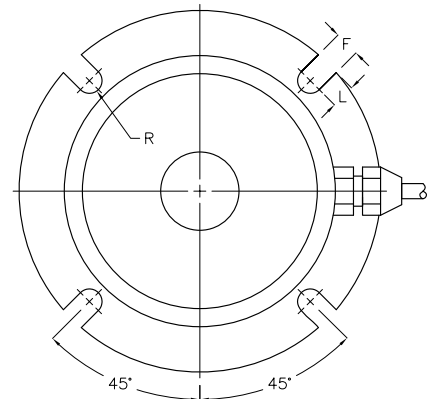
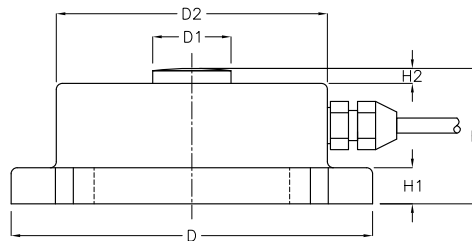
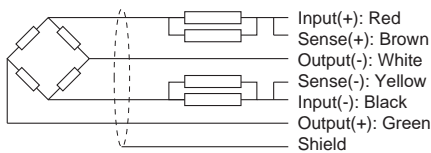
Application: Truck & Silo Scales
Hopper Weigher
Industrial Weighers



Specifications:

Capacity	t	1 / 2 / 3 / 5 / 10	
Accuracy Class		C2	C3
Max. Number of Verification Intervals	n _{max}	2000	3000
Minimum Load cell Verification Interval	V _{min}	E _{max} /5000	E _{max} /7500
Temperature Effect on Zero	%FS/10°C	≤ ± 0.029	≤ ± 0.019
Temperature Effect on Sensitivity	%FS/10°C	≤ ± 0.017	≤ ± 0.011
Combined Error	%FS	≤ ± 0.030	≤ ± 0.020
Creep	%FS	≤ ± 0.023	≤ ± 0.016
Output Sensitivity	mv/v	2.0 ± 0.01	
Input Resistance	Ω	770 ± 30	
Output Resistance	Ω	700 ± 7	
Insulation Resistance	MΩ	≥ 5000	
Zero Balance	%FS	1.0	
Temperature, Compensated	°C	-10 ~ +40	
Temperature, Operating	°C	-30 ~ +70	
Excitation, Recommended	v	5 ~ 15(DC)	
Safe Overload	%FS	150	
Ultimate Overload	%FS	250	
Standard Cable Length	m	3 (1t ~ 3t) , 4 (5t ~ 10t)	

Dimensions:



CAP.(t)	D	D1	D2	F	H	H1	H2	L
1	115	22	86	8.4	43	12	5	8
2	120	26	90	8.4	45	12	5	8
3,5	128	20	100	10.4	46	8	5	7
10	160	40	120	10.4	63	15	10	10

All dimensions: mm.