

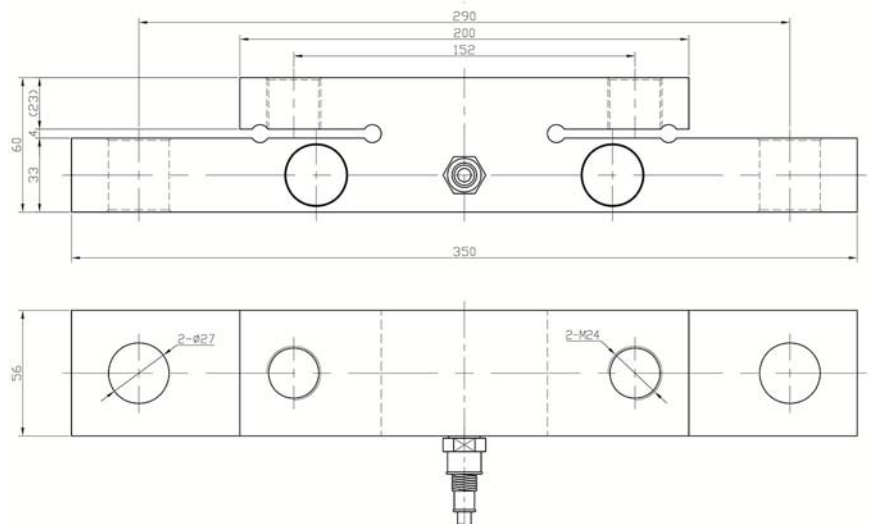
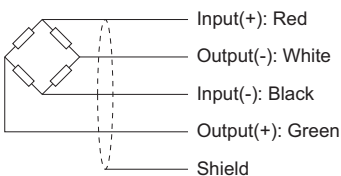
- Type:** Double Ended Beam
- Material:** Alloy Steel
- Surface:** Nickel Plated Treatment
- Protection:** IP 67
- Features:** Low Profile / Easy to use
Dynamic and static loading
- Application:** Measuring the weight of trucks
Wheel / Axle Weigh
Garbage Truck
Agriculture
Forestry



Specifications:

Capacity	Klb	12.5
Max. Number of Verification Intervals		500
Minimum Load cell Verification Interval		$E_{max}/1000$
Temperature Effect on Zero	%FS/10°C	$\leq \pm 0.02$
Temperature Effect on Sensitivity	%FS/10°C	$\leq \pm 0.02$
Combined Error	%FS	$\leq \pm 0.1$
Creep Error (30 Minutes)	%FS	$\leq \pm 0.1$
Non-linearity	%FS	$\leq \pm 0.1$
Hysteresis	%FS	$\leq \pm 0.1$
Repeatability	%FS	$\leq \pm 0.1$
Output Sensitivity	mv/v	1.0 ± 0.010
Input Resistance	Ω	385 ± 10
Output Resistance	Ω	350 ± 3
Insulation Resistance	M Ω	≥ 5000
Zero Balance	%FS	2.0
Temperature, Compensated	°C	-10 ~ +50
Temperature, Operating	°C	-20 ~ +60
Excitation, Recommended	v	5 ~ 20(DC)
Safe Overload	%FS	120
Ultimate Overload	%FS	150
Standard Cable Length	m	12

Dimensions:



All dimensions: mm.